



## E600 SmartPOS Hybrid Terminal

### MAIN FEATURES



**Powered by Android**



**8" HD IPS Merchant-facing display,  
4.3" Customer Display**



**4G + WiFi + Bluetooth**



**Integrated high-speed, thermal  
printer with automatic paper cutting**



**Li-Ion Battery, 2600mAh, 7.2V**

### Featuring the Hybrid SmartPOS E600 Android Terminal...

With the E600, portability doesn't mean sacrificing features. This solid, all-in-one terminal transforms the shopping experience by allowing customers purchase over the counter, in close interaction with retail staff.

The hand held E600 features a large yet compact display, fast printer and payment acceptance module, allowing any type of transaction to be conducted while on the move.

The E600 is ideal for a wide range of merchants, including fashion and hospitality to add an element of mobility within a store or restaurant environment, food delivery or courier businesses, and street stalls or festival booths.

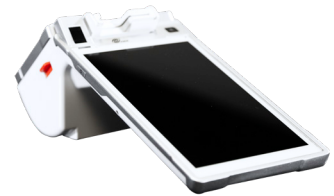
This terminal comes coupled with Take Charge's revolutionary processing solutions and more.

# E600

## SmartPOS

### Hybrid Terminal

## SPECIFICATIONS



### FULL FEATURES

- Powered by Android
- 8" HD IPS Merchant-facing display, 4.3" Customer Display
- 4G + WiFi + Bluetooth
- Integrated high-speed, thermal printer with automatic paper cutting
- Built-in GPS
- Li-Ion Battery, 2600mAh, 7.2V
- Built-in NFC Contactless
- Dual Cameras

### ADDITIONAL SPECS

<b>Memory</b>	1GB RAM + 8GB FLASH
<b>Processor</b>	Quad-core Cortex®-A53 11.4 GHz
<b>Battery</b>	Li-Ion Battery, 2600mAh, 7.2V
<b>Payment Module</b>	PCI & EMV Certified Payment Acceptor with Full NFC Contactless 4.3-inch color touchscreen
<b>Card Reader Types</b>	Hybrid reader: Magnetic Stripe and Smart Card Contactless around LCD display
<b>Display</b>	8-inch All Perspective IPS Display   800 x 1280 Pixels HD Display Capacitive Touchscreen
<b>Communications</b>	FDD-LTE /TDD-LTE   WCDMA /TD-SCDMA / EVDO GSM / CDMA Bluetooth 4.1   WiFi: 802.11 b/g/n, 2.4GHz, Support Hotspot
<b>Peripheral Ports</b>	1 x SIM Card Slot 12 x SIM Card Slot (optional) 11 x Audio Jack   1 x Micro SD Card Slot, Supports up to 128GB 11 x Micro USB 2.0 1 x DC Jack 11 x Fingerprint Module (optional)
<b>Printer</b>	2-inch Thermal Printer Head   Print Speed: 80 mm/s Paper Width: 58 mm   Diameter: 50 mm
<b>Cameras</b>	0.3 Megapixel Camera for 1D & 2D Code Scanning 5-Megapixel Fixed Focal Front Camera
<b>Certifications</b>	PCI PTS S.x   CE   FCC   IC   UL   RoHS   EMV L1 & L2   Visa PayWave MasterCard Contactless   MasterCard TQM   Amex ExpressPay Interac Flash L2   Discover D-PAS CSEC   APCA   ABCECS